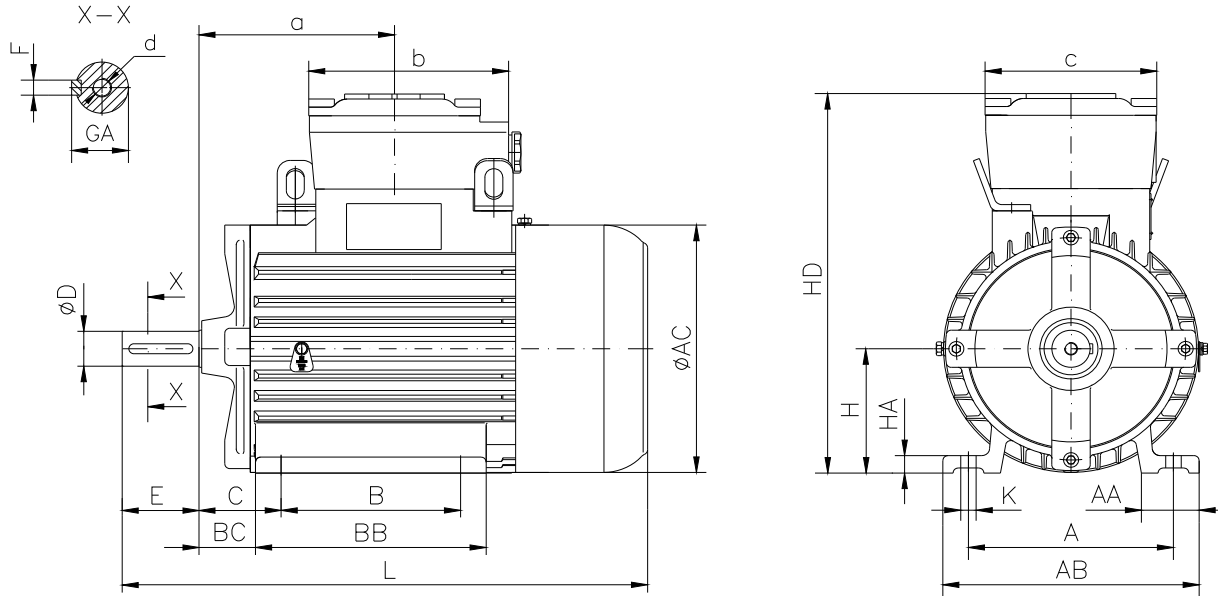


DATA SHEET

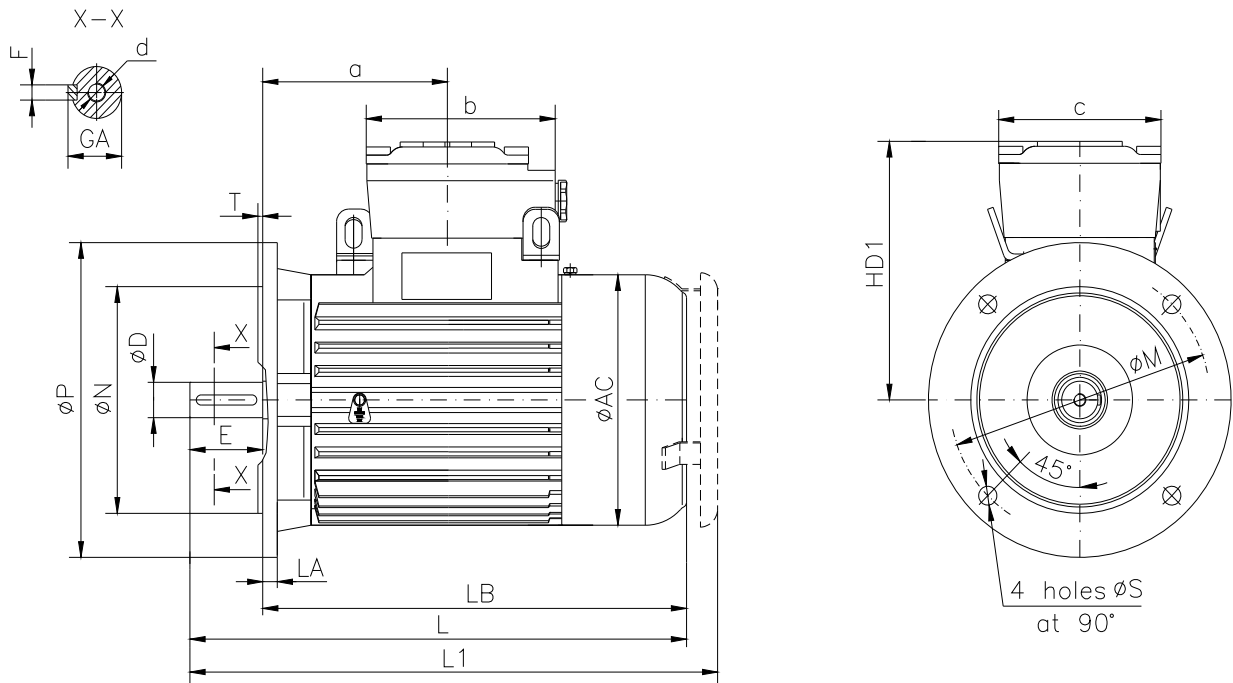
○ Type.....	ASA 90S-6
○ Reference standard.....	IEC 60034-1 EN 60079-0 EN 60079-1 EN 60079-7
○ Rated output.....	0.75 kW
○ Rated stator voltage.....	400V
○ Stator current at 100% load.....	1.99[A]
○ Number of poles.....	6
○ Rated speed.....	933 rev/min
○ Rated frequency.....	50 Hz
○ Efficiency at 100% load.....	71.5%
○ Power factor at 100% load.....	0.76
○ Break-down torque.....	3.4 x Mn
○ Locked rotor torque.....	2 x Mn
○ Locked rotor current.....	3.2 x In
○ Rotor inertia.....	0.005782 kgm ²
○ Insulation class.....	F
○ Direction of rotation.....	Both(CW&CCW)
○ Protection degree.....	≥IP55
○ Mounting.....	IM
○ Cooling method.....	IC 411
○ Max. ambient temperature.....	+40°C
○ Altitude.....	1000m
○ Bearing type.....	6305 2Z drive end 6305 2Z non drive end
○ Weight.....	30 Kg
○ Outline drawing.....	Page 2
○ Vibration level :.....	A (acc.IEC 60034-14)
○ Noise level	acc.IEC 60034-9
○ Cable entries.....	1xM25x1.5
○ Climate execution	N

**The overall and mounting dimensions
IM 1001**



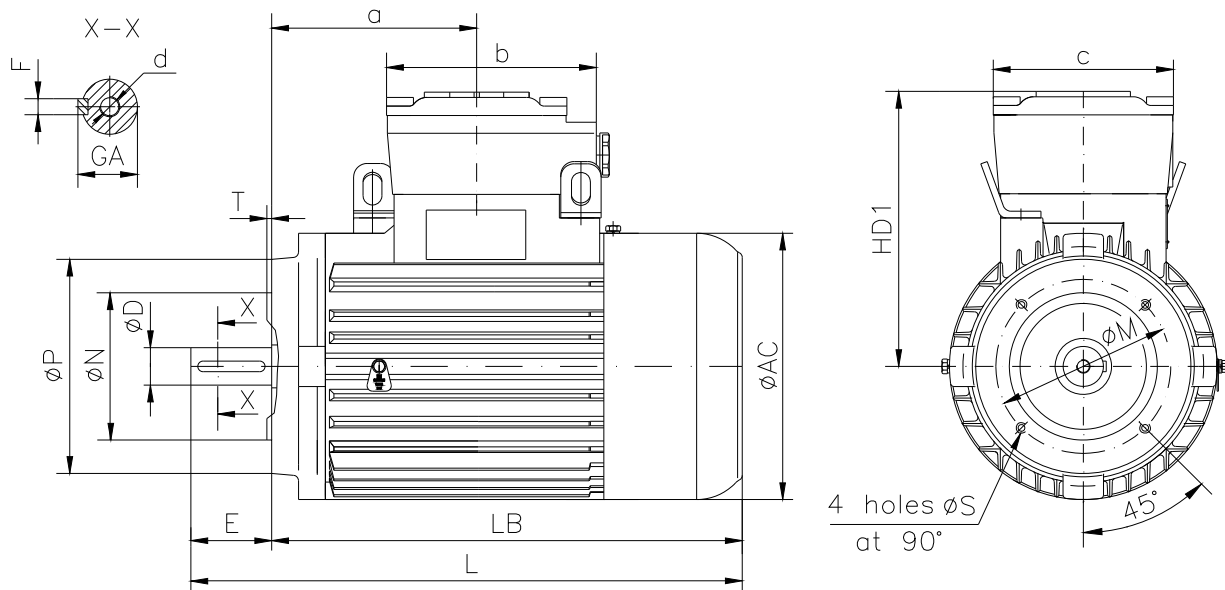
Frame size	Dimensions (mm)																				
	Foot mounting										Shaft extension						HD	AC	L	a	b
A	B	C	H _{0.5}	K	AA	AB	BB	BC	HA	D	E	F	GA	d							
90S-6	140	100	56	90	10	40	180	147	39.5	13	24j6	50	8h9	27	M8	272	177	361	140	125	120

**The overall and mounting dimensions
IM 3001; IM 3011**



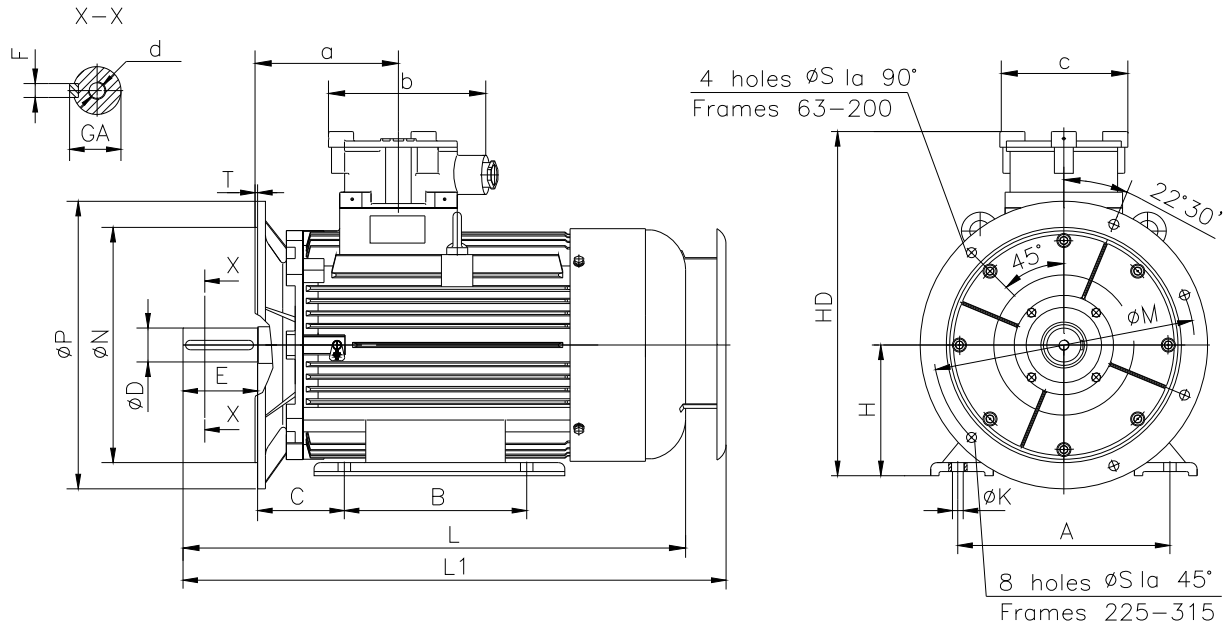
Frame size	Dimensions (mm)										HD1	AC	LA	LB	L	L1	a	b	c
	Flange mounting (B5)					Shaft extension													
90S-6	N	M	P	S	T	D	E	F	GA	d									
	130j6	165	200	12	3.5	24j6	50	8h9	27	M8	182	177	10	311	361	392	140	125	120

**The overall and mounting dimensions
IM 3601**



Frame size	Flange	Dimensions (mm)													
		Flange mounting (B14)					Shaft extension		HD1	AC	LB	L	a	b	c
N	M	P	S	T	D	E									
90S-6	F115	95j6	115	140	M8	3	24j6	50	182	177	311	361	140	125	120
	F130	110j6	130	160	M8	3.5									

**The overall and mounting dimensions
IM 2001**



Frame size	Dimensions (mm)																				
	Foot mounting					Flange mounting					Shaft extension					HD	L	L1	a	b	c
90S-6	A	B	C	H _{-0,5}	K	N	M	P	S	T	D	E	F	GA	d						
	140	100	56	90	10	130j6	165	200	12	3.5	24j6	50	8h9	27	M8	272	361	392	140	125	120